

# Stellar 1.1 Installation Guide

These are the software installation instructions for the Thermo Scientific™ Stellar™ 1.1 Instrument Control Software.

For additional details, refer to the topics below:

- [System Requirements](#)
- [New Installation](#)
- [Upgrade Installation](#)
- [Instrument Configuration](#)

## System Requirements

The following table outlines the minimum hardware and software requirements.

### NOTE:

- Local administrator privileges are required to install Thermo Scientific software.
- Software testing was limited to the scope of the provided configuration.
- The Chromeleon™ software compatibility matrix outlines verified compatibility between instrument control software versions, Chromeleon software versions, and instrument models. For more information or to access the compatibility matrix, go to [support.thermoinformatics.com/downloads/default.aspx](https://support.thermoinformatics.com/downloads/default.aspx), and select **Chromeleon** → **Chromeleon** → **Related Drivers** → **Driver Compatibility Matrix**.

**Table 1** System requirements

System	Requirements
Computer	<ul style="list-style-type: none"><li>• 3.1 GHz Intel™ Quad-Core processor</li><li>• 16 GB RAM (32 GB recommended)</li><li>• 1 TB hard drive</li><li>• Two Ethernet gigabit network ports</li><li>• DVD-ROM drive</li><li>• Monitor display resolution of 1920 × 1080</li></ul>
Software	<ul style="list-style-type: none"><li>• Microsoft™ Windows™ 10 Enterprise LTSC 2021</li><li>• Thermo Scientific™ software:<ul style="list-style-type: none"><li>– Foundation 3.1 SP10</li><li>– Xcalibur™ 4.7 SP1</li><li>– FreeStyle™ 1.8 SP2 QF1</li></ul></li></ul>

## New Installation

**IMPORTANT:** To run the instrument control software, you must install or upgrade your Xcalibur data system software to meet the minimum requirements. Refer to the [Xcalibur 4.7 SP1 Release Notes](#) for installation or upgrade instructions.

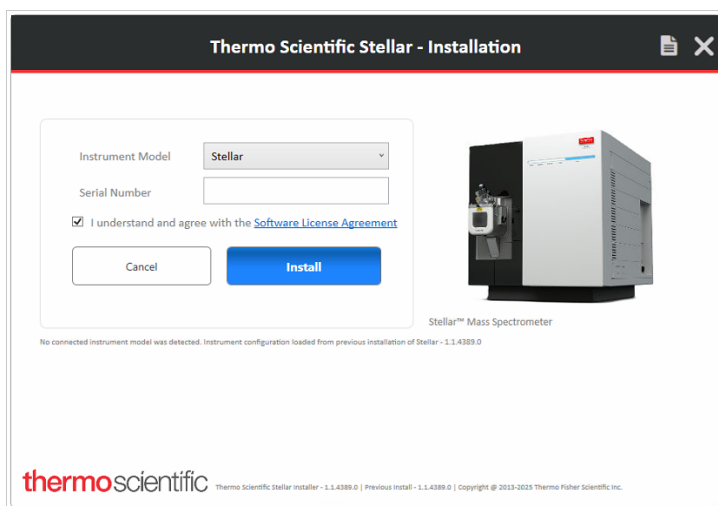
### Prerequisites

- ✓ Install Xcalibur 4.7 SP1 with Foundation 3.1 SP10 (or later version).  
**NOTE:** If you are installing just the standalone Method Editor (workstation) application, the Xcalibur software is not required.
- ✓ Download the Stellar 1.1 software from the Thermo Scientific Software Download Portal. Go to <https://thermo.flexnetoperations.com>.  
**NOTE:** You must register to use the features of the software download portal.

### Procedure

1. Open the Stellar 1.1 electronic media from the applicable location on your instrument computer.
2. Browse the software folder and launch the installer (.exe) from one of the following folders:
  - **Stellar:** This folder contains the full software installation setup.
  - **StellarWorkstation:** This folder contains the standalone Method Editor (workstation) application. Use this option if you want to run the Method Editor in a standalone environment and do not have an instrument connected.

**Figure 1** Thermo Scientific Stellar - Installation window



3. Specify the following parameters:
  - **Serial Number:** Enter your instrument serial number.

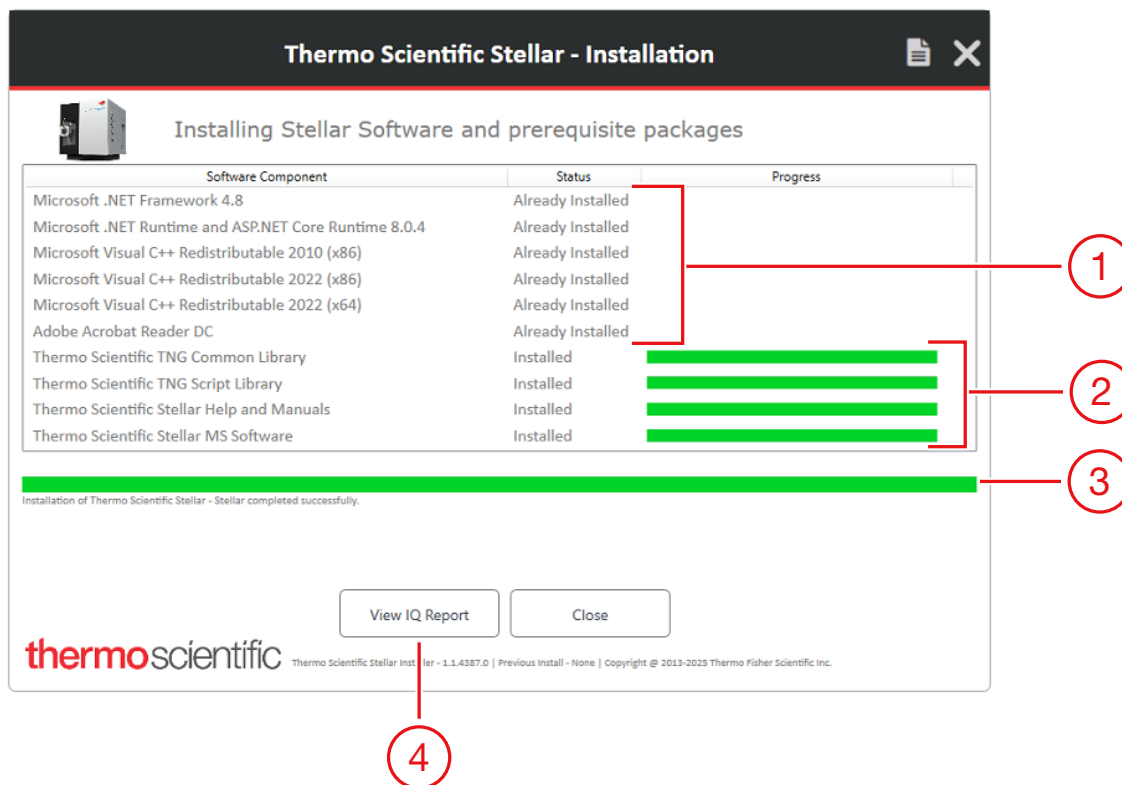
**NOTE:** The serial number is automatically populated if an instrument is detected. If no instrument is detected and the field is left blank, you can enter the serial number later in the Thermo Foundation Instrument Configuration window after the software is installed.

- **Software License Agreement:** Read the software license agreement, then select the checkbox to proceed.

4. Select **Install** to start the installation process.

The installer will install the required components and skip any components that are already installed.

**Figure 2** Installation progress window



No.	Description	No.	Description
1	Component status bar (example of skipped items)	3	Installation status bar
2	Component status bar	4	Opens the software installation qualification report

5. Select **View IQ Report** to open the software installation qualification report after the installation is completed. The report contains various installation action details and provides an installation qualification result score (pass or fail).

**NOTE:** If your system fails the installation qualification, contact Thermo Fisher Scientific Technical Support.

6. Select **Close** to exit the installation window.

7. Reboot the instrument if needed.

---

## Upgrade Installation

Follow this procedure to upgrade from a previous version of the instrument control software.

**IMPORTANT:** To run the instrument control software, you must install or upgrade your Xcalibur data system software to meet the minimum requirements. Refer to the [Xcalibur 4.7 SP1 Release Notes](#) for installation or upgrade instructions.

### Prerequisites

- ✓ Run the calibration check (*Check, Calibrate if required* option) in the Tune application before you upgrade the instrument control software. If your system does not pass the calibration, contact Thermo Fisher Scientific Technical Support.
- ✓ Download the Stellar 1.1 software from the Thermo Scientific Software Download Portal. Go to <https://thermo.flexnetoperations.com>.  
**NOTE:** You must register to use the features of the software download portal.

### Procedure

1. From the Windows taskbar, select **Start** → **Thermo Scientific Foundation 3.1** → **Instrument Configuration**.  
The Thermo Foundation Instrument Configuration window appears.
2. Highlight the MS icon, then select **Remove** to remove it from the Configured Devices list.
3. Select **Done** to close the Thermo Foundation Instrument Configuration window.
4. Uninstall the existing Stellar software.
5. Install or upgrade to Xcalibur 4.7 SP1, if applicable.
6. Install the Stellar 1.1 software.  
For additional details, refer to [New Installation](#).

---

## Instrument Configuration

Use the Thermo Foundation Instrument Configuration to configure the instrument, if applicable.

### Prerequisites

- ✓ Install the Stellar 1.1 software.

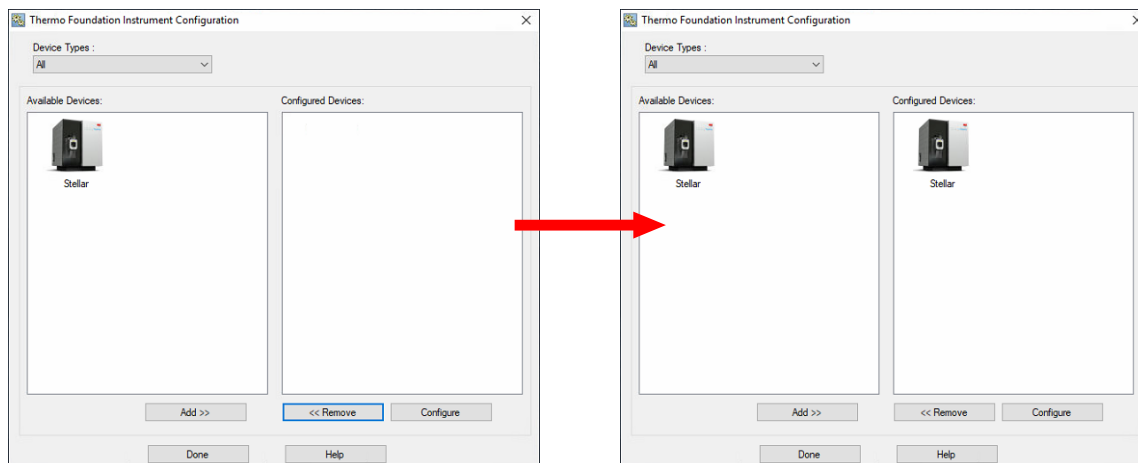
### Procedure

1. From the Windows taskbar, open the Thermo Foundation Instrument Configuration by navigating to the following path:

**Start** → **Thermo Scientific Foundation 3.1** → **Instrument Configuration**

2. Highlight the Stellar icon, then select **Add** to place it in the Configured Devices list.

**Figure 3** Thermo Foundation Instrument Configuration window



3. Highlight the Stellar icon and select **Configure**, or double-click on the icon to open the Instrument Configuration dialog box.
4. Specify the configuration parameters for the MS, as applicable.  
For details on the instrument configuration parameters, refer to the Tune Help.
5. Select **OK** to close the Instrument Configuration window.
6. Select **Done** to close the Thermo Foundation Instrument Configuration window.
7. Restart the instrument computer if prompted.