



**thermo**scientific

## Release Notes

### Chromeleon 7 Chromatography Data System

Software Version 7.3.2 MUC • September 2024

**thermo**scientific

**Copyright**

Copyright © 2024 Thermo Fisher Scientific Inc. All rights reserved.

**Trademarks**

ACQUITY, Alliance and Waters are trademarks of Waters Corporation.

Agilent is a trademark of Agilent Technologies.

Microsoft, Windows, .NET Framework and SQL Server are trademarks of Microsoft Corporation.

Oracle and Oracle Database are trademarks of Oracle

PerkinElmer and Clarus are trademarks of PerkinElmer Inc.

Shimadzu is a trademark of Shimadzu Corporation.

ProteinSimple and Maurice are trademarks of ProteinSimple Corporation and Bio-Techne Corporation.

All other trademarks are property of Thermo Fisher Scientific Inc. and its subsidiaries.

Thermo Fisher Scientific Inc. provides this document to its customers with a product purchase to use in the product operation. This document is copyright protected and any reproduction of the whole or any part of this document is strictly prohibited, except with the written authorization of Thermo Fisher Scientific Inc.

The contents of this document are subject to change without notice. All technical information in this document is for reference purposes only. System configurations and specifications in this document supersede all previous information received by the purchaser.

This document is not part of any sales contract between Thermo Fisher Scientific Inc. and a purchaser. This document shall in no way govern or modify any Terms and Conditions of Sale. The Terms and Conditions of Sale shall govern all conflicting information between the two documents.

**For Research Use Only. Not for use in diagnostic procedures.**

---

## Table of contents

1	Maintenance updates .....	4
2	Release Notes.....	5
3	What's new in Chromeleon 7.3.2 MUC.....	6
3.1	Chromeleon Studio Updates .....	6
3.2	Chromeleon Administration Console Updates.....	7
3.3	System Updates.....	7
4	Resolved issues .....	8
5	Limitations and known issues .....	13
5.1	Limitations with Thermo Scientific Instruments .....	13
5.2	Limitations with the Waters Driver Pack.....	13
5.3	Limitations with Agilent ICF .....	13
5.4	Limitations with Agilent Drivers for Chromeleon.....	14
5.5	Limitations with other third-party instruments .....	14
5.6	Limitations with setup .....	14
5.7	Other limitations.....	14
6	Backward/Forward compatibility issues.....	16
6.1	Chromeleon Enterprise compatibility between Chromeleon versions.....	16
6.2	CMBX file compatibility between Chromeleon versions.....	16

## 1 Maintenance updates

Maintenance Updates (MU) are not a full installation of their base software. They only contain files updated as a result of defect fixes relating to maintenance updates. However, maintenance updates are cumulative; that is, an MU also includes all the files and defect fixes of previous MUs. Thus, to install a Maintenance Update:

- It is necessary to have a full base version of Thermo Scientific™ Chromeleon™ installed.
- It is not necessary (but causes no problems) to have previous MUs installed first.

---

## 2 Release Notes

These Release Notes list the new features and improvements of the current Maintenance Update release only. For information on extensions and enhancements in previous Chromeleon releases, including previous Maintenance Updates, please refer to the Release Notes of that release.

### 2.1 Other documentation

The following documents have been updated with this release:

- *List of Supported Instruments - Chromeleon 7.3.2 MUC*
- *Online Help* (distributed with this release)
- *Supported Operating Systems - Chromeleon 7.3.2 MUC*
- *Installation Guide - Chromeleon 7.3.2 MUC*

### 2.2 Installation

Before you install this Maintenance Update, verify that Chromeleon 7.3.2 is installed. To install this Maintenance Update, run the following program from the distribution media:

Install.exe

#### 2.2.1 Allotrope Exporter

If the optional Allotrope Exporter package has previously been installed, it is also necessary to install the latest version which is part of a separate installation package. Please contact your local Thermo Fisher Scientific representative for a copy of this.

To install this additional Maintenance Update, run the following program from the Allotrope distribution media:

Install.exe.

#### 2.2.2 Hotfixes

Any previously installed Hotfixes must be removed prior to installing 7.3.2 MUC. The relevant files will be replaced as part of this update. Details of the specific files can be found in the Hotfix Release Notes.

### 3 What's new in Chromeleon 7.3.2 MUC

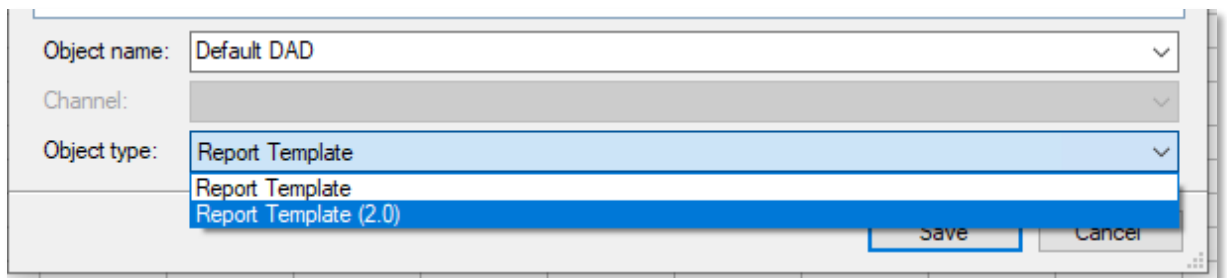
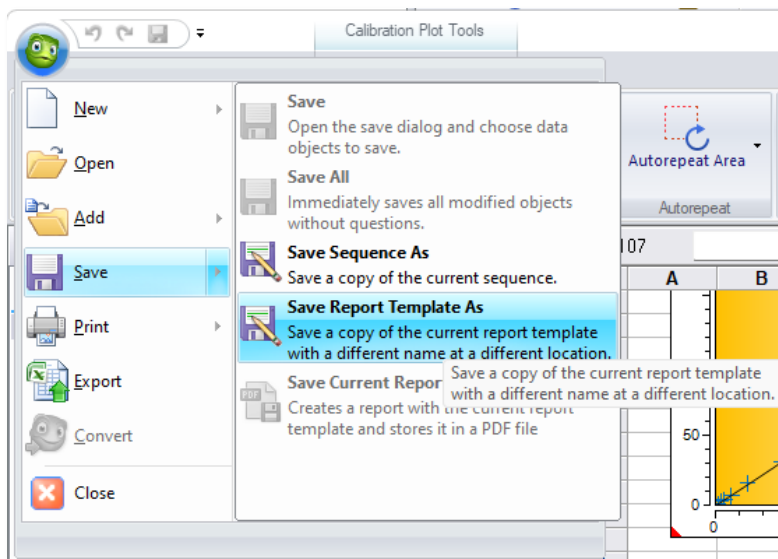
This section provides a short overview of all new features of Chromeleon 7.3.2 MUC. For more details, refer to the *Online Help*.

#### 3.1 Chromeleon Studio Updates

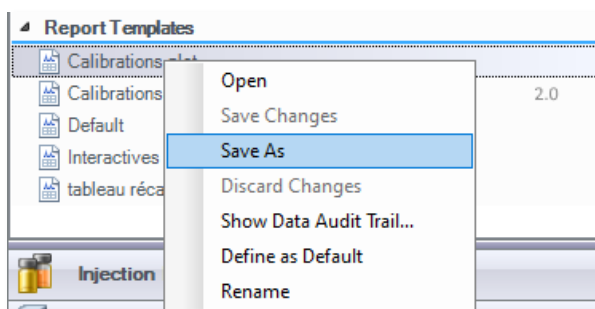
##### 3.1.1 Report Template v1.0 to Report Template v2.0 conversion [610374]

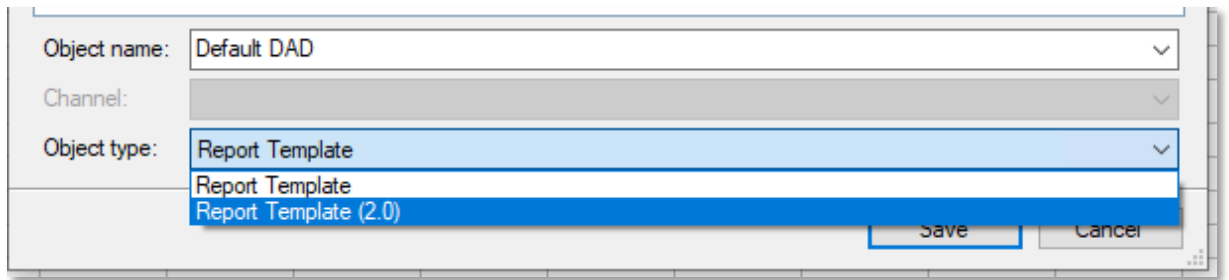
With this release, it is possible to save Report Template v1.0 as v2.0 by using any of these 2 options:

1. Option: **Save > Save Report Template As** located in the Charlie menu:



2. Option: **Save As** located in the context menu that appears when user performs right click on the specific Report Template v1.0 in the Navigation Pane:





**Note:** v2.0 Report Templates cannot be saved as v1.0 Report Templates.

**Important:** Not all reporting objects are yet supported within Reporting 2.0. This will therefore impact any conversion that contain such objects.

**The current list of unsupported report objects in Reporting 2.0:**

**Tables:**

- Chromeleon 6 History Table,
- Fraction Table,
- SST and IRC Table,
- Tube Table,
- SIEVE Frame Table,
- SIEVE Processing Parameters Table.

**Plots:**

- Fraction Tray View Plot,
- Injection Rack View Plot,
- SIEVE Frame Plot.

## 3.2 Chromeleon Administration Console Updates

### 3.2.1 License Manager Updates [417769]

Instrument Manufacturer-Specific License: With this release, a Waters Instrument Control Add On license option appears in the License Manager in the Chromeleon Administration Console. This Waters Instrument Control Add-On license is not enforced with this Chromeleon release.

## 3.3 System Updates

### 3.3.1 Installation: Response File Support to allow joining a Region [628502]

Support for unattended installation using response files has been extended to include the following command line: **DiscoveryJoinRegionId**. This provides support for a Chromeleon client to automatically join a selected (Proxy) Region upon its first run after the installation.

Further details can be found in the Enterprise Documentation.

### 3.3.2 Discovery configuration: Enhanced Connection security [628500]

With this release, **Enhanced Connection security** is **always ON** and cannot be turned OFF. All Chromeleon Clients and Chromeleon Services will now default to enhanced connection security using the new certificate with TLS 1.2. Any clients prior to this update that require to join the Chromeleon Domain will need Enhanced Connection Security enabled.

## 4 Resolved issues

This chapter describes the issues that have been resolved with the release of Chromeleon 7.3.2 MUC only. For issues that have been resolved in previous MUs, please refer to the Release Notes for the relevant release.

Other trivial and minor issues may have been resolved but are not mentioned here. If you require information about the status of an issue observed in a Chromeleon 7 release, but which is not listed here, please contact your local Thermo Fisher Scientific representative for more information.

**The numbers in the first column of the table below refer to the Thermo Fisher Scientific tracking IDs.**

ID	Description
<b>267233</b>	ePanels: ePanels would spontaneously change the background color of Edit Field controls to Light Pink and sometimes the Edit Field controls would look empty. Now Edit Fields on the ePanel retain the entered values and no longer spontaneously change the background color to Light Pink.
<b>284114</b>	Electronic signature: When submitting, reviewing, and approving sequences, recent comments were not loaded into the "Pick Comment" dialog. Now the recent comments are loaded correctly.
<b>294194</b>	Console: Item "New Query" was missing from the data vault context menu, so it was only available from the Console main menu. The data vault context menu now includes this option.
<b>301509</b> <b>380834</b> <b>405427</b>	Printout or Export of Injection List: After changing some values of injections in a sequence (for example, injection name, sample weight, processing method) and saving the modifications it could happen that a subsequent printout or export of the injection list, either from the Chromeleon Console or the Report Designer in a corresponding Studio Session, showed values for the modified injections which were apparently not saved. After restarting the Chromeleon Console or viewing the details of the corresponding data audit trail record the values for some of the changed injections were still the previous ones. Now with new Chromeleon release, prior to any printout or export, the property values for all injections of the sequence will be reloaded from the database. The printout or export will always use the stored values for the injections.
<b>301794</b>	Chromeleon users experienced problems with making folders Read-Only, because the folders contained sequences that had been signed while they were still in the queue of a remote Instrument. This is now fixed and prevented from happening again in the future. It is impossible to create an electronic report and to create electronic signatures while the sequence is queued or downloaded (redirected) to a remote IPC.
<b>331143</b>	Instrument controller: For a TDS5 that has multiple instruments attached, it was observed in some instances that the Instrument Controller service would take too long to start and time out. This has been resolved.
<b>347669</b>	Processing Method: SST/IRC: In some instances, the "Select Fixed Injection" dialog for the Signal-to-Noise Ratio evaluation would not open unless a peak was selected. Now, when creating an SST/IRC for Signal-to-Noise Ratio evaluation, clicking the browse button to edit the formula 'peak.sn("Qnt")' allows the "Select Fixed Injection" window to open and the required injection can be selected.
<b>372394</b>	Administration Console: Inconsistencies for concurrent logon were observed. Now, when the Concurrent logon policy is disabled users cannot log onto a separate Chromeleon session on the same or multiple computers.

ID	Description
<b>397274</b>	In specific cases, loading of raw data for sequences with MS Processing Compatibility Mode set to <i>Chromeleon 7.3.1 and earlier</i> did not work unless the Discovery Configuration option <i>Require enhanced connection security</i> was selected. This option is now always enforced, which fixes the issue. For more details about the newly enforced option, see section <i>Discovery configuration: Enhanced Connection Security [628500]</i> .
<b>406801</b>	Database scheme upgrade: The database scheme upgrade for datavaults from version 7.3.2.101 to any later version didn't work. This has been resolved.
<b>414372</b>	User Management Audit Trail: Unexpected entry "Administrator Password Recovery" with "SYSTEM" logon appeared after reboot or restart of services. This entry no longer appears.
<b>421214</b>	eWorkflow list takes a long time to build in the Chromeleon Console. Loading of eWorkflow list was optimized to handle scenarios when some of the eWorkflows were stored on offline data vaults. (Resolved in 7.3.2 MUB).
<b>422687</b>	Some users observed problems with remote sequences resulting in failures to modify the sequences and in upload failure. These failures were already addressed in Chromeleon 7.3.2 MUB, where we have redesigned the retry logic during downloading of sequence data to IPC, and we have addressed issues related to checking sequence redirection information, which was the root-cause of many failed downloads.
<b>424603</b>	Reporting: In some instances, an error would be observed when trying to create electronic reports for sequences and report generation would fail. The error message may have been generated when producing a report containing Calibration and Summary sections containing component tables, this has been resolved.
<b>453243</b>	Reporting 2.0 - Print/Export Selected Injections from the Console: After selecting multiple injections in the Console and selecting a Report Template 2.0 for a corresponding export Chromeleon executed the print or export only for the first selected injection. With the new Chromeleon version this is fixed now. Now all selected injections are participating in the print or export.
<b>454660</b>	Known limitation described with Exactive Series 2.13 driver resulting in error "Can not load assembly ThermoFisher.Foundation.IO" is addressed with Exactive Series 2.13 SP1 driver.
<b>458367</b>	Data audit trail Processing Method: When changing the calibration type of a component in a Processing Method from Automatic to Manual Calibration or vice versa or if the manual calibration coefficients are changed afterwards, the details of a corresponding data audit trail record for this processing method does not show any difference. This has been fixed now. When using the calibration type Manual Calibration all changes are correctly listed in the details of a corresponding data audit trail record.
<b>459191</b>	Calibration Mode 'Standard Addition': When using the calibration mode 'Standard Addition', peak amounts of injections with type 'Unknown' are also computed if the injection property 'Spike Group' is set to the same value as the one which is used to group the injections with type 'Spiked' or 'Unspiked'. The online help of Chromeleon has been extended to cover this special use case.
<b>463285</b>	Vanquish Diode Array Detector users with Chromeleon versions 7.2.10 MUF or newer randomly observed sequence aborts due to an abort message "Failed to lock the module for exclusive use" issued by the driver. This problem has been fixed. (Resolved in 7.3.2 MUB)

ID	Description
<b>464338</b>	Vanquish Autosampler: If a tray that was no longer required for further injections was removed from the autosampler, the sequence was interrupted with an error message: "Can't proceed with sequence because the specified position is not available with this rack configuration." Now, if a tray is no longer required for further injections, it can be removed from the sampler without stopping the queue. If a tray is still required for future injections, removing it will cause a queue abort when the injection position is reached.
<b>486120</b>	Replication Framework – Processing Method Updates: If a sequence has been downloaded more than once to the same IPC, changes to the Processing Method while the sequence was downloaded were not possible anymore. An error message telling a violation of primary keys appeared when trying to save the changes. This problem is now fixed 7.3.2 MUC. Processing Methods can be updated now for downloaded sequences even if the sequence is downloaded multiple times to the same IPC.
<b>468403</b>	Instrument Overview: Performance of DiscoveryAccess has been improved. This will result in a faster load time for the instrument list.
<b>468868</b>	License Manager: License entitlement is updated accordingly in the license manager when license entitlement is changed for existing license serial numbers.
<b>487031</b>	User Management: Performance of Chromeleon User Management Service when multiple LDAP domains are configured has been improved.
<b>488443</b>	GC 7890: For a GC 7890 configured to Chromeleon, if connecting to an instrument when it was in a pre-run state, and started a sequence, data acquisition would not occur.
<b>490144</b>	"Allow formula customization" privilege is now required in Reporting 2.0 based View Settings to ensure only privileged users can change an existing report formula in interactive results / report template or create new report formulas / columns which are not the default ones.
<b>491653</b>	Atlas: Atlas data with a calibration RF mode of "User RF" when imported into Chromeleon would previously import the response factor values into the calibration intercept (C0) field instead of the calibration linear coefficient (C1) field. This has been resolved.
<b>492399</b>	Administration Console: Domain Resources: Computers: Column without label shows motherboard serial number. This column has now a label: "Computer ID".
<b>494360</b>	<p>Slow and failed downloads caused by incorrect fully qualified domain name (FQDN) resolution has resulted in the following error message            "Instruments.Server.WcfInstrument - Timeout. The internal communication pipe for the instrument controller request cannot be connected.            Dionex.Chromeleon.Instruments.Server.InstrumentServerException: Timeout. The internal communication pipe for the instrument controller request cannot be connected".</p> <p>Added option to UriHelper to optimize resolution of short hostnames in an FQDN environment. This is optionally enabled using a registry key.</p>
<b>519852</b>	Chromeleon Console: Performance issues when creating a processing method in a folder containing 500+ other processing methods have been resolved.
<b>550207</b>	IPC: Running remote sequences may have encountered slower performance and increased disk space usage due to a broken Raw Data Cache. Longer acquisition times may have also occurred. These Issues with Raw Data Cache performance have been resolved.

ID	Description
587568	(Remote) Instrument access: 'Chromeleon was unable to establish a connection to the instrument <NAME> on <IPC>.' - 'Retry' brings instrument back online. Connection handling has been improved.
589960	Data Audit Trail Chromatogram: If changes in the Processing Method or injection list have an impact on the integration of chromatograms and these chromatograms are manually integrated you could save these manual modifications first but discard the changes in the Processing Method or injection list or save these changes later. When looking at the details for the audit trail record for the manual integrated chromatogram the comparison against the previous chromatogram version is using the version of the Processing Method or injection list at the time the chromatogram modifications have been saved. In certain scenarios, e.g. when the integration of chromatograms with the previous version of Processing Method or injection list failed, the details of the audit trail for the manual chromatogram integration showed an error. To avoid this scenario Chromeleon will prevent that manually integrated chromatograms can be saved now without saving pending changes for the Processing Method of the injection list at the same time or discarding these changes first. This will prevent that showing the details of a corresponding data audit trail record runs into the described error scenario.
592296	Application Processing Service: The Application Processing Service is responsible for executing the targeted processing requests for MS Sequences. If this service couldn't connect anymore to the datavault where the MS Sequence has been stored it got stuck and didn't execute any further processing request. The problem could be cured by restarting the Application Processing Service. Now if the service runs into this database connection problem it will reset the database connection automatically. A restart of the Application Processing Service is not necessary anymore.
596692	Console: Context menu for custom formulas allowed users to edit, add or remove custom formulas without checking for the required privileges. Now these operations in the Console depend upon the same privilege checks as in the Studio.
593190	Editor Report Template 2.0: Editing a Report Template 2.0 in the Report Designer category of a Chromatography Studio window did not work when adding or editing a Chromeleon Result Formula in a spreadsheet cell of the report template. Instead, a window with the error message 'Method not found' popped up, and it was not possible to access the Properties window for the Chromeleon Result Formula.
593443	License manager: Instrument controllers are now updated accordingly without exception in the Instrument Controller License interface.
593831	Administration Console: Reports: Inconsistent date/time format time zone and different report creation steps. Time zone is now displayed in the reports.
597362	Administration Console - Domain Resources: Different values for computer name entry in Domain Resources list and DiscoveryResources.dat. Duplicate Updater resources are no longer displayed.
606620	Fully Qualified Domain Name (FQDN) host name resolution and QuickResolveShortNames are enabled but UriHelper still attempts slow resolution of short names.
608266	Markes TD100: For sequences with injections that use 'Same' and 'SameTube' as the RecollectionType, both definitions can be used successfully to acquire a sequence.
608637	Studio: Improvements have been made to the "UV spectral Library Screening" tab. Users with the privilege to modify the processing method can now connect a Spectral Library to a Processing Method.

ID	Description
611360	Injection Query: If Studio was opened from results of an injection query, and edits were performed in the Studio. If the query was modified and re-run, then an error was thrown as soon as the Studio was closed. No further query runs were possible, and a new injection query had to be opened. Now it is possible to modify and re-run queries and run new queries without such issues.
611463	Injection Query: If Studio was opened from results of an injection query, and some edits were performed in the Studio, then an error was thrown as soon as the Studio was closed. Now there is no such error anymore.
613626	Copying Processing Methods with peak groups from 7.2 SR5 to datavault scheme 7.3.2.106: Processing Methods which had been last updated with a Chromeleon version prior to 7.2.9 (for example, 7.2 SR5) and also containing peak groups assigned to component records, could not be copied successfully to the most recent datavault scheme (7.3.2.106). After copying such Processing Methods, for example, when creating a new sequence and picking an existing Processing Method template, all previous peak groups which are mapped to so-called Named Peak Groups in 7.3.2 were not copied. This is fixed with 7.3.2 MUC. The copied Processing Method contain now all Named Peak Groups of the original Processing Method.
613854	eWorkflows: In some instances, it would happen that editing an eWorkflow method would result in the error message "Chromeleon has encountered an unexpected error - Object reference not set to an instance of an object". This has been resolved.
614581	Injection Query: If Studio was opened from results of an injection query, and some edits were performed in the Studio, then an error was thrown as soon as the Studio was closed. Now there is no such error anymore.
634145	Chromeleon 7.3.2 Report 2.0 Calibration History Table. The issue with inserting a Calibration History Table in a Report 2.0 template without being an associated item of a sequence was fixed.
638761	Electronic signature: It was possible to electronically sign (submit) a sequence while it was queued on a remote instrument. This caused serious issues when a user needed to perform Manual Upload or Manual Move after a failed remote data acquisition. To prevent such issues, it is now not possible to electronically sign (submit) sequences while they are queued on remote instruments.

## 5 Limitations and known issues

The comprehensive list of limitations and known issues affecting Chromeleon 7.3.2 LTS are documented in the Chromeleon 7.3.2 MUA and subsequent MU Release Notes.

New, updated, and recently reported known limitations and issues identified during the development of Chromeleon 7.3.2 MUC are listed below.

### 5.1 Limitations with Thermo Scientific Instruments

ID	Description
452557	Vanquish Solvent Monitor: After a solvent channel of the Vanquish Solvent Monitor has been disabled on the 'More Options' subpanel, it can only be reactivated via Chromeleon command window. <u>Workaround:</u> navigate to command window (F8) and change VSM_X.IsUsed to On.
452168	Intact Protein Deconvolution: In rare instances, as a result of overlapping isotopic envelopes in the data, mass shift discrepancies of 1 Dalton can occur when using deconvolution algorithms due to some of the complexities that are involved in deconvolution. This is a relatively well-known limitation of deconvolution algorithms. <u>Workaround:</u> Using Biopharma Finder 5.0 (and higher), users can select the "Sequence-specific" option from the "Isotope Table" menu under the Xtract parameters and link a target sequence to the method. The isotope table will automatically be generated by the software and use it as the theoretical isotopic distribution for the data. However, this functionality is not currently provided in Chromeleon.
467367	Intact Protein Deconvolution (IPD): It is not possible to run Intact Protein Deconvolution on Shimadzu CDF files with a 'Sliding Window' Processing Method. This is because some data formats for importing do not provide enough information about the data to then allow a preferred scan filter to be generated by the deconvolution engine, resulting in an error message "Deconvolution Error. Preferred scan filter is not found in the raw data file." This error is not seen with the 'Average' Processing Method.
493071	For the UltiMate 3000 FLD-3100 and FLD-3400RS and the Vanquish VF-D50-A and VF-D51-A no message is provided in the Audit Trail upon completion (successful or failed) of a calibration/validation.

### 5.2 Limitations with the Waters Driver Pack

ID	Description
None	None

### 5.3 Limitations with Agilent ICF

For a general overview regarding the Agilent Instrument Control Framework, please refer to the document *Chromeleon and Agilent ICF – Quick Start Guide.pdf*, found in the \Documents\ folder of the Chromeleon 7.3.2 installation disk. For Agilent drivers, please refer to Agilent documentation.

ID	Description
None	None

## 5.4 Limitations with Agilent Drivers for Chromeleon

ID	Description
None	None

## 5.5 Limitations with other third-party instruments

ID	Description
465692	<p>The Shimadzu SPD-M20A DAD driver may scale single channel data wrongly on the time scale if the data collection rate (DCR) is changed. This seems to occur in sequences with a blank run and if the DCR in the method is changed from the DCR that was set before the sequence was started. The 1D data for the first injection is wrongly scaled and the acquisition time is wrong. 3D data and 1D data extracted from 3D data have the correct time difference between adjacent data points.</p> <p><u>Workaround:</u> Change the DCR in advance to avoid the DCR changing for the first injection of the run. Since single channel acquisition is an extract from the 3D field, one possible workaround is to extract 2D channel data from the 3D field, which contains the full, correct data</p>

## 5.6 Limitations with setup

ID	Description
649908	<p>When upgrading from version 7.3.2 MUb to 7.3.2 MUC, an error message may be observed on the completion splash screen:</p> <p>"Installation Incomplete... Failed to execute package Thermo Scientific Chromeleon CDS 7.3.2. MUb (version 7.3.2.12429)"</p> <p>When using the Updater Service, the installation status may also read "Installation failed". This issue is caused by a defect within the MUb installer and does no impact the overall update to MUC.</p> <p><u>Workaround:</u></p> <p>Station IQ will pass successfully, indicating that all MUC files have been applied correctly. Chromeleon Console: Help&gt;About Chromeleon will display the correct build identification "Version 7.3.2 MUC".</p> <p>Administration Console: Domain Resources, the correct Version number will be displayed, matching the IQ.</p>
740711	<p>When uninstalling Chromeleon 7.3.2 MUC, it has been identified that the Station OQ functionality is impacted due to the automatic uninstallation of the "Thermo.Chromeleon.OqPqTemplates.msi" package by the installer. However, the reinstallation of the existing application's templates is not automatic. To address this issue, it is recommended to perform an installation repair of the existing application in order to reinstall the OQ templates successfully.</p>

## 5.7 Other limitations

ID	Description
<b>437606</b>	Chromeleon running on an IPC with Palo Alto Networks® Cortex XDR®: When running an Orbitrap Exploris 120 results in a failed Ready Check with the error message "ValidateMethod timed out". <u>Workaround:</u> Disable Palo Alto Networks® Cortex XDR®.
<b>587083</b>	If the Instrument Configuration Manager is terminated while an instrument configuration is in progress, after a restart of the Instrument Configuration Manager another instrument configuration may be rejected with an error message "The instrument controller service appears to be busy. Cannot change configuration. Try again later."
<b>627923</b>	Mutual exclusive Privileges to Modify Processing Methods: There are 3 mutual exclusive privileges to modify a Processing Method. 'Modify Processing Method', 'Modify Processing Method - Restricted' and 'Modify Processing Method - Custom'. Only one of these privileges can be enabled in a role. If a user has logged to the Chromeleon Console with a role where one of these privileges (for example, Modify Processing Method) is enabled and a different one (for example, Modify Processing Method – Restricted) is enabled in an Access Control Level (ACL) role in the root of the datavault or in any subfolder (Datavault / Folder Properties -> Access Control) the user cannot modify a processing method in this datavault or subfolders. When trying to save the Processing Method an error message appears that a Modify Processing Method privilege is missing.

---

## 6 Backward/Forward compatibility issues

### 6.1 Chromeleon Enterprise compatibility between Chromeleon versions

In general, for customers with Enterprise Chromeleon systems, Thermo Fisher Scientific does not recommend connecting clients or IPCs with different versions of Chromeleon into the same Chromeleon Domain.

Features available in newer versions, such as email notification, automated reporting, automated LIMS export, and so on, may not work correctly with data created or acquired on an older client or IPC.

Similarly, if data that was created on a newer version of Chromeleon is accessed from a client running an older version, then the data can be opened, edited, and saved without losing any parameters specific to the newer version. But any new parameters, like data processing enhancements or newer report variables, will not be included in any data processing as they are “invisible” to the older client and may cause results or reports to be generated with different values to those which would be generated on the newer version.

Additional restrictions may also apply. If you have any questions or concerns, please contact your local Chromeleon support channel.

### 6.2 CMBX file compatibility between Chromeleon versions

CMBX files are used for transferring data and data objects between separate Chromeleon systems.

CMBX files may be considered “forward compatible,” that is, a CMBX file generated by an earlier Chromeleon software release is always readable in newer releases of the software.

However, the reverse is not true. A CMBX file generated by a newer release of Chromeleon software should **NOT** be imported into older releases of the software. CMBX files generated by newer software releases may contain database schema extensions that are unrecognizable in older software releases, causing significant problems or damage to the data vault of the older release.

Additional restrictions may also apply. If you have any questions or concerns, please contact your local Chromeleon support channel.

[www.thermofisher.com](http://www.thermofisher.com)

---

**Thermo Fisher Scientific Inc.**  
168 Third Avenue  
Waltham, MA 02451  
USA

**ThermoFisher**  
SCIENTIFIC